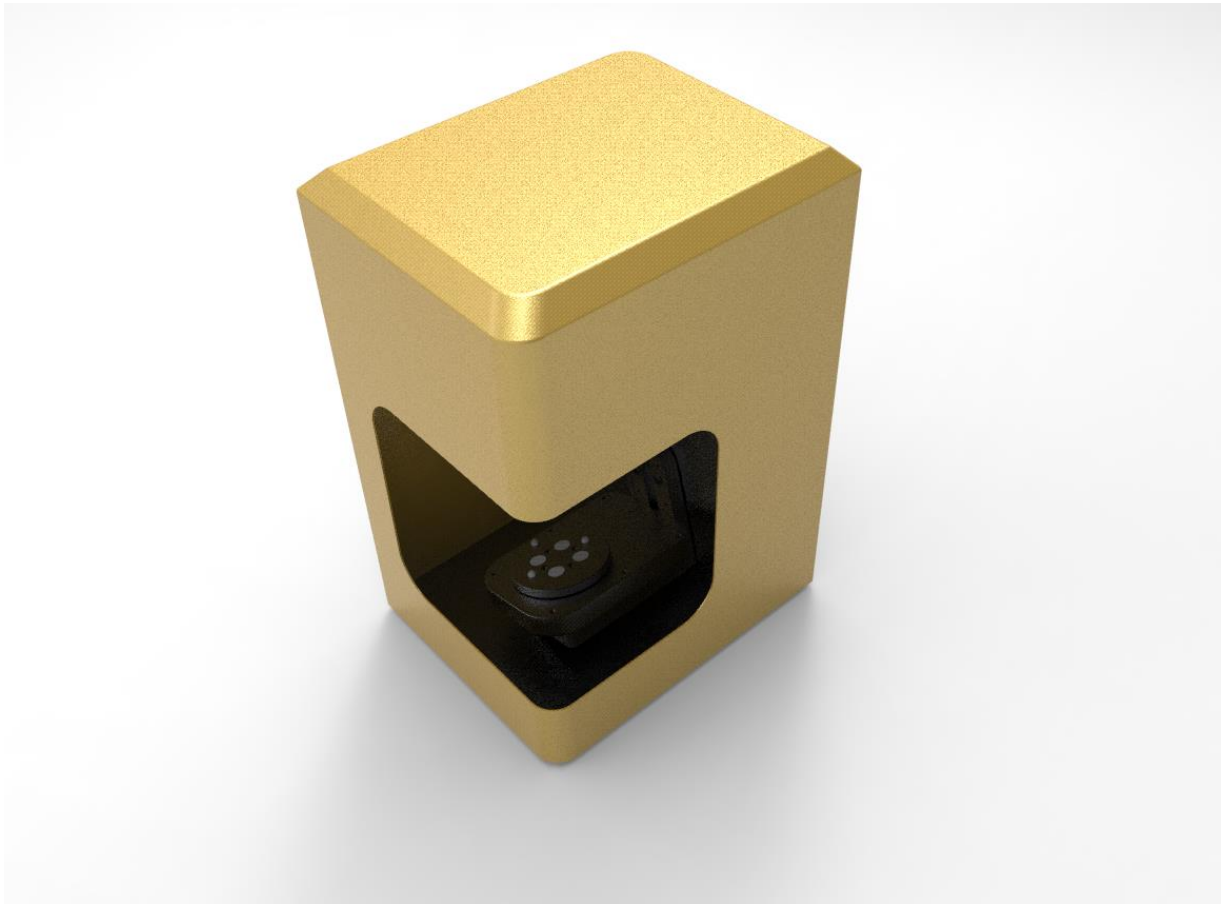




# Thunk3D

Jewelry 3D Scanner JS 300



<b>Scan Element Type</b>	CMOS	<b>Optical Resolution</b>	0.01-0.4mm
<b>Color Depth</b>	36 bit	<b>Camera</b>	CMOS 1.31MP*2
<b>Scan Speed</b>	330,000 point/s	<b>Range of veiw</b>	50/100/200/300/400mm
<b>Raster</b>	DLP 1280*1080 LED	<b>Align Mode</b>	Feature/Mark/Turntable/Frame
<b>Lens</b>	16mm 5mp	<b>Advantage</b>	Scan tiny object 1-2cm size
<b>Certificate</b>	CE/FCC/WEEE/CNAS	<b>Application</b>	Jewelry design, CAD design, Reverse Engineering