



Product details

Dial Indicator, Lug Back

10mm, 0,01mm, Peak Hold Type

Item number: 2046S-80



Description

This special dial indicators offer you the following benefits:

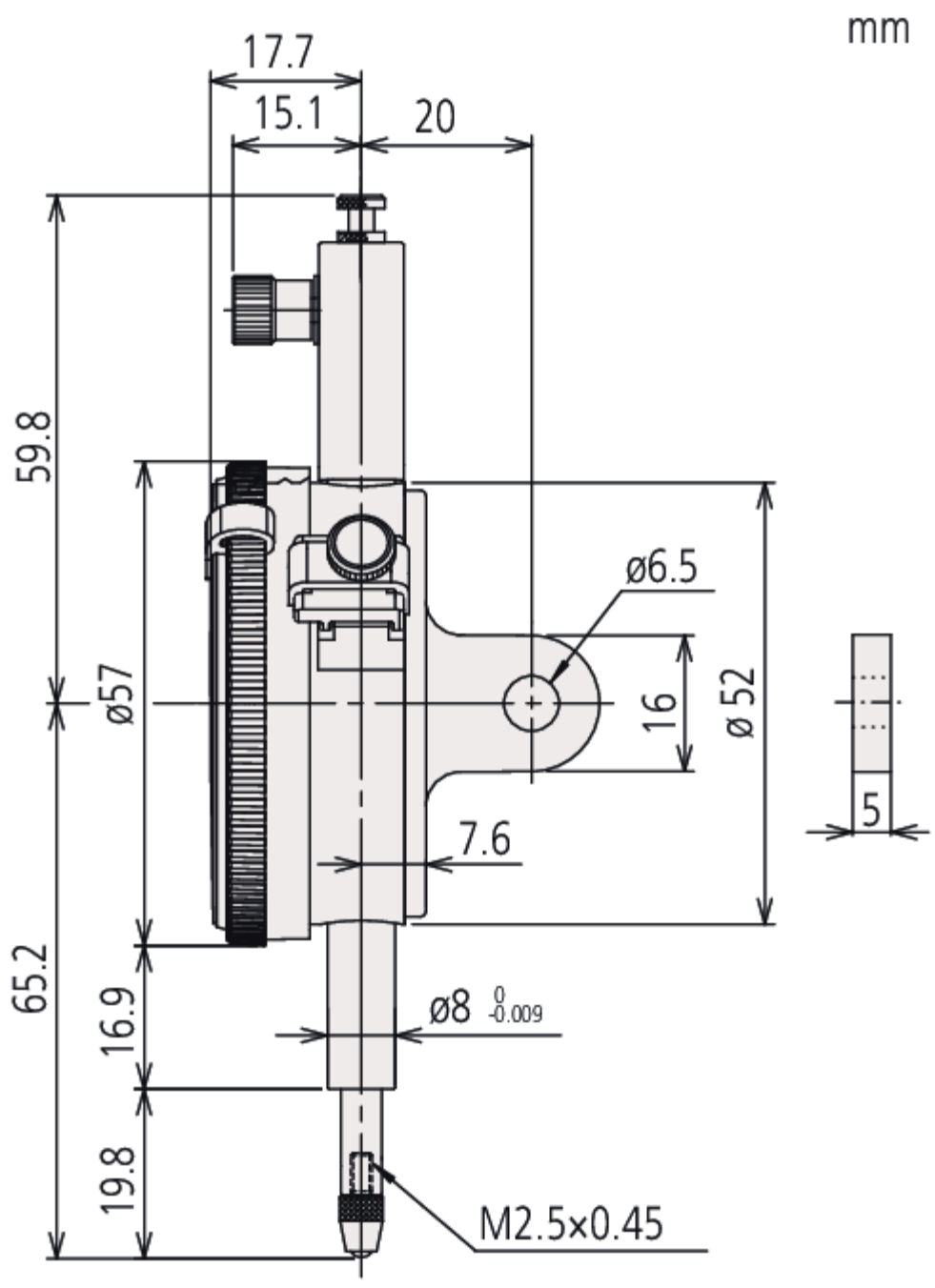
- In an adjustable pointer type the pointer can be adjusted independently of the position of the spindle by rotating the top knob.
- In a peak hold type a mechanism holds the pointer and the spindle at the position of maximum depression and hence displays the maximum value.

Specification

Range:	10 mm
Range per rev.:	1 mm
Graduation:	0,01 mm
Scale:	0-100 (100-0)
Measuring force:	0,4 - 5,0 N
Stem:	8 mm
Mass:	158 g
Contact point:	Carbide tipped, thread: M 2.5 x 0.45 mm

Continuous dial:	Yes
Peak retaining:	Yes
EN ISO 463:	Errors or indication over a range of (see b
Any 1/10 revolution:	5 μm
Any 1 revolution:	10 μm
Any 1/2 revolution:	9 μm
Range:	15 μm
Functions:	ISO type
Inch-Metric:	Metric

Dimensions



Spare parts
Consumable spares:



Contact Element Ball Point
8,3mm Length, Metric
21AZA319



Contact Element Ball Point
7,3mm Length, Carbide,
Metric
901312