

eHLS1



HANDHELD LIDAR SCANNER

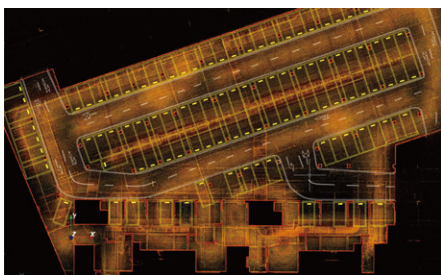
- **Fast scanning Speed**
Its scanning speed can be up to 655,000 points per second.
- **High Data Accuracy**
More high-precision 3D point cloud data can be obtained, supported by the new high-precision SLAM algorithm.
- **Impressive Memory Storage**
It is equipped with a 1T solid state disk.
- **Real Time**
Visualize data in real-time with a smartphone or tablet.
- **Multi-platform supported**
It can be expandable to multiple platforms, including backpack, vehicle, drone, intelligent robot, etc.

eHLS1 is the first portable handheld laser scanner independently designed and developed by eSurvey. It is lightweight, flexible, and easy to operate. Adopting the new high-precision SLAM technology, it can create 3D reconstruction of the environment indoors and outdoors without depending on GNSS positioning, and help professionals to achieve centimeter-level point cloud data while walking. With self-researched eSCAN processing software, effective post-process of point cloud data and multiple applications of point cloud become possible.

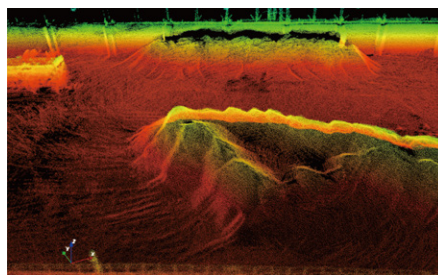
Specification

Range	120 m
Lidar channels	32 channels
Points per second	655,000
Laser product classification	Level 1
Laser wavelength	865 nm
FOV	360° x 270°
Scanning accuracy	3 - 5 cm
Data format	DAT, PCD

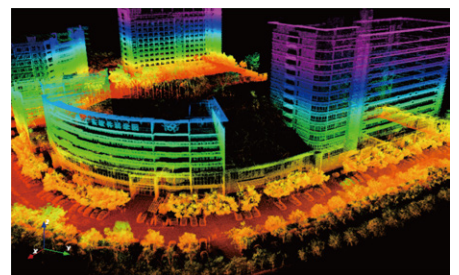
Dimension	<ul style="list-style-type: none"> ■ Handheld: 295 mm x 197 mm x 99.7 mm (with handle) ■ Host: 128 mm x 185 mm x 52 mm
Weight	<ul style="list-style-type: none"> ■ Handheld: 1.6 kg (with handle) ■ Host: 1.0 kg (without battery)
Housing	Aircraft-grade aluminum (high protection and high interference resistance)
Power supply	12 - 24 V dc/25 W
Working time	3 hours (one battery)
Storage	1T (expandable)
Working environment	Indoor and outdoor
Working temperature	-20°C - 60°C
Protection level	IP54



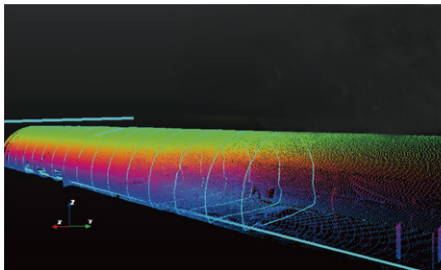
Underground Garage



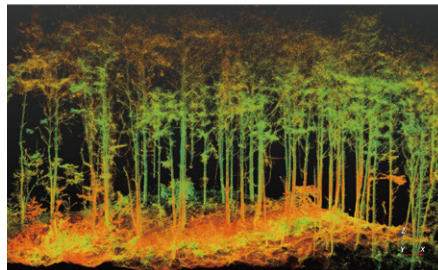
Stockpile Volume Measurement



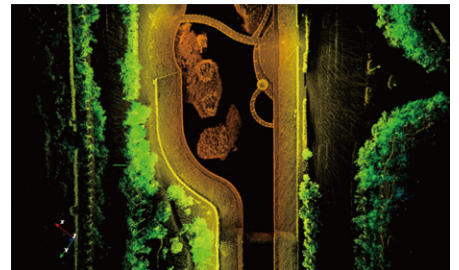
Architectural Survey



Tunnel Survey



Forestry Survey



River Survey