

Refrigerators & Freezers

- › Laboratory Refrigerators
- › Laboratory Freezers
- › Blood Bank Refrigerators
- › Plasma Freezers
- › Pharmacy Refrigerators

General Applications

Laboratory Cooling

Chemical, Reagents, Culture storage.
Temperature Sensitive Material, Enzyme storage,
Pre-Freezing.

Medical Cooling

Valuable blood and blood plasma storage in life science.
Sensitive pharmaceutical products and vaccine
storage in clinics, hospitals, retail pharmacies.



Product Name		Laboratory Refrigerators	Laboratory Freezers			
Model		CLG	FDG	FCG	FMG	FHG
International standard		DIN 58345	DIN 58375			
Chamber volume (L)		156, 303, 603, 805, 1327	303, 647	154, 303, 647		
Temp. control	Min. temp. (°C/°F)	2 / 35.6	-50 / -58	-35 / -31	-25 / -13	-15 / 5
	Max. temp. (°C/°F)	10 / 50	-35 / -31	-25 / -13	-15 / 5	0 / 32
Door type		Selectable - Solid door or Glass door	Solid door			
Shelf	Wire	0	0	0	0	0
	Wire, Slide	0 (optional)	-	-	-	-
	Drawer, Slide	0 (optional)	0 (optional)	0 (optional)	0 (optional)	0 (optional)
Recorder		0 (optional)	0 (optional)	0 (optional)	0 (optional)	0 (optional)
Cable port		0 (except for 156L)	-	-	-	-
Battery backup		-	-	-	-	-
Electronic remote alarm		0 (optional)	0 (optional)	0 (optional)	0 (optional)	0 (optional)

Technical Benefits

> Performance

- Reliable cooling storage of laboratory and medical samples.
 - Designed and tested in accordance with the international standard (DIN 58345 / DIN 58375)
 - Satisfied the strict requirements of the International medical standards. (ISO13485 / DIN 58371)
- Optimizing temperature control system for high temperature stability.
 - Automatic defrost and intelligent dual refrigeration system minimizes temperature change. Manual defrost system is also available for immediate control. (except for CLG)
- Shock absorbing door construction.
 - Magnetic door seal and air-tight silicone door seal for absorbing impact from opening and closing the door.
- Fully insulated chamber ensures minimal chamber temperature fluctuation.

> Convenience

- Wide selection covers all of your application needs.
 - Storage sample (lab / medical)
 - Temperature down to 50°C
 - Chamber size (154L to 1327L)
- Easy maintenance design.
 - Rounded corners for easy cleaning.
 - Corrosion resistant stainless steel interior chamber.
 - Dirt-repellent external surface with power coating.
- Intuitive and easy operation by VFD display with touch-sensitive buttons and jog dial.
- Clear view of the storage samples without opening the door. (for the models with glass doors only)
- Precise and easy documentation.
 - Chart type recorder is built in the medical cooling devices.
 - Optional three types of recorder. (dot / chart / thermal line recorder)

> Safety

- Essential safety protection system.
 - High and low temperature limit alert.
 - Automatic power cut-off system against overheating.
 - Protection system by fuses against overcurrent.
 - Built-in door lock for safe sample storage.
 - Keypad lock button prevents inadvertent parameter changes.
- Advanced safety system to meet strict requirements of the medical cooling devices.
 - Dual temperature controllers.
 - Battery backup system.
 - Built in auto-dialing remote alarm to alert abnormal temperature change.
- Safe door open system to minimize heat loss and protect the stored sample.
 - Audible and visible open door alarms.
 - Automatic fan stop when door opening.
- Eco-friendly refrigerant protects the global environment.

Blood Bank Refrigerators	Plasma Freezers	Pharmacy Refrigerators
BSR	BSF	PSR
ISO13485 / DIN 58371	DIN 58375	DIN 58345
303, 614	303, 647	303, 614
4 / 39.2	-40 / -40	0 / 32
	-25 / -13	10 / 50
Glass door	Solid door	Glass door
-	-	0 (optional)
-	-	0 (optional)
0	0	0
0	0	0
-	-	-
0	0	0
0	0	0

Ideal for research and industrial laboratories.

Your laboratory space is efficiently managed with our various different size models.



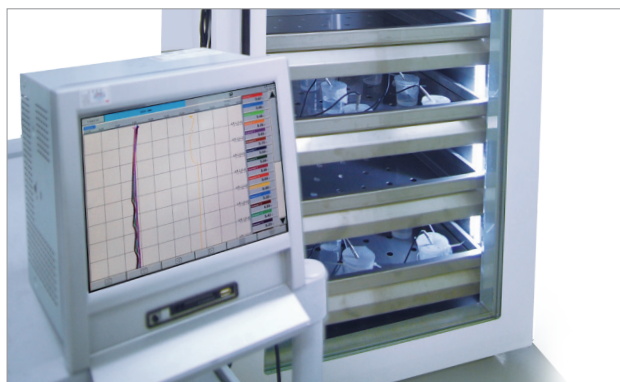
CLG models with optional recorder

Standard accessories

- Wire shelves, Door key
- Cable port (except for 150L chamber)

Optional accessories see page 140

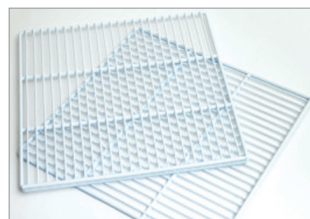
- Slid wire shelves, Slid drawers
- Auto dialing remote system



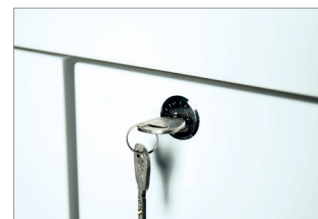
Reliable temperature control



Display



Wire shelves



Door key lock



Performance

- Fully insulated chamber ensuring minimal chamber's temperature fluctuation.
- High thermal efficiency evaporation system, made of low corrosive materials.
- Optimizing defrost systems
 - Innovation auto-defrost system automatically activated on detecting amount of frost accumulated in the evaporator for CLG-150, 300, 650, 850.
 - None defrost system needed for 1400 due to its dual refrigerating system.

Convenience

- Intuitive and easy-to-operate control panel with VFD and touch-sensitive buttons.
 - Easy temperature unit conversion between °C and °F
- Clear observation of stored samples.
 - Tempered glass door with built in heating wire. (for the models with glass doors only)
 - Built-in bright fluorescent lighting. (except for CLG-150)
- High-quality 304 grade stainless steel interior.

- Efficient internal space use with height adjustable wire shelves.
- Built-in 50mm diameter cable port for external probes or wires. (except for CLG-150)
- Dedicated stand with casters and stacking kit for CLG-150 for use in labs with limited space. (optional)
- Three types of recorders to choose from (optional)
 - Dot recorder (6 point)
 - Chart recorder (6", 24hr/7days)
 - Thermal line recorder

Safety

- High/low temperature protection, Over current protection.
- Open door alarm and automatic fan stop interlocked with door opening for minimization of heat loss.
- Keypad lock function, Built in door lock with a key.

Model		CLG-150	CLG-300	CLG-650	CLG-850	CLG-1400
Chamber volume (L / cu ft)		156 / 5.5	303 / 10.7	603 / 21.3	805 / 28.4	1327 / 46.9
Temperature range (°C / °F)		2 to 10 / 35.6 to 50				
Refrigerator (Hp)	230V, 50/60Hz	1/6	1/6	1/4	1/3	1/4×2ea
	120V, 60Hz	1/6	1/6	1/6	1/6	1/6×2ea
No. of wire shelf (standard / max.)		2 / 6	3 / 11	3 / 17	3 / 17	6 / 34
No. of wire shelf, slide (max., optional)		4	7	11	11	22
No. of drawer shelf, slide (max., optional)		3	5	8	8	16
Max. load per shelf (kg / lbs)		26 / 57.3		30 / 66.1		
Material	Interior	Stainless steel #304				
	Exterior	Steel, 1 mm, powder coating				
	Insulation	60mm, Polyurethane foam				
Dimension (W×D×H)	Interior (mm / inch)	550×580×490 / 21.7×22.8×19.3	550×550×1000 / 21.7×21.7×39.4	650×640×1450 / 25.6×25.2×57.1	750×740×1450 / 29.5×29.1×57.1	1430×640×1450 / 56.3×25.2×57.1
	Exterior (mm / inch)	683×791×870 / 26.9×31.1×34.4	670×770×1515 / 26.4×30.3×59.6	770×865×1965 / 30.3×34.1×77.4	870×965×1965 / 34.3×37.9×77.4	1550×865×1965 / 61×34.1×77.4
	Net weight (kg / lbs)	100 / 220.4	130 / 286.6	210 / 463	260 / 573.2	350 / 771.6
Electrical requirements (230V, 60Hz)		2A	2.3 A	4A	5A	6A
Cat. No.	Solid door type	AAHE1001K	AAHE1011K	AAHE1021K	AAHE1031K	AAHE1041K
	Glass door type	AAHE1101K	AAHE1111K	AAHE1121K	AAHE1131K	AAHE1141K
Electrical requirements (230V, 50Hz)		2A	2.3 A	4A	4.2A	6A
Cat. No.	Solid door type	AAHE1002K	AAHE1012K	AAHE1022K	AAHE1032K	AAHE1042K
	Glass door type	AAHE1102K	AAHE1112K	AAHE1122K	AAHE1132K	AAHE1142K
Electrical requirements (120V, 60Hz)		4A	4.5 A	5 A	5.2A	9.5A
Cat. No.	Solid door type	AAHE1003U	AAHE1013U	AAHE1023U	AAHE1033U	AAHE1043U
	Glass door type	AAHE1103U	AAHE1113U	AAHE1123U	AAHE1133U	AAHE1143U

※ Technical data according to DIN 58345.

※ FDA establishment registered company. FDA listed products.

A variety of freezer models for subzero degree storage of your sensitive lab material with innovative defrost system.



FDG/FCG/FMG/FHG models

with optional recorder

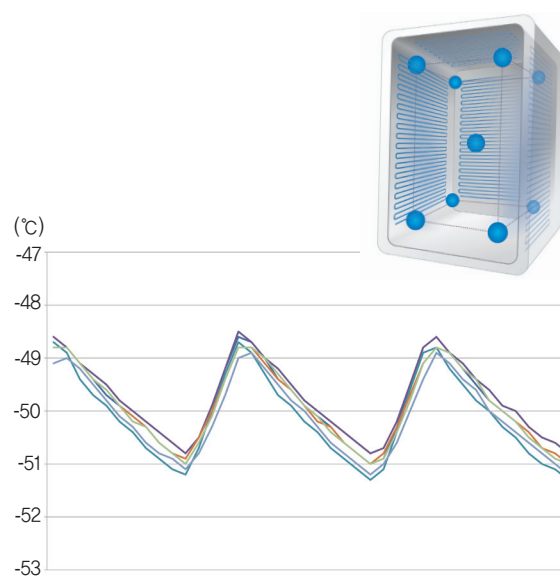
Standard accessories

- Wire shelves, Door key
- Cable port (except for 150L chamber)

Optional accessories

see page 140

- Three type recorders (dot / chart / thermal line)
- Auto dialing remote system



Reliable temperature control



Performance

- Excellent freezing control down to minimum -50°C (model dependent)
 - FDG model down to -50°C
 - FCG model down to -35°C
 - FMG model down to -25°C
 - FHG model down to -15°C
- Fully insulated chamber ensuring minimal chamber's temperature fluctuation.
- High thermal efficiency evaporation system, made of low corrosive materials.
- Dual defrost systems
 - Innovation auto-defrost system automatically activated on detecting amount of frost accumulated in the evaporator.
 - Additional manual defrost system for immediate frost removal.

Convenience

- Four-temperature different freezing models cover various storage application.
- Intuitive and easy-to-operate control panel with VFD and touch-sensitive buttons.
 - Easy temperature unit conversion between $^{\circ}\text{C}$ and $^{\circ}\text{F}$

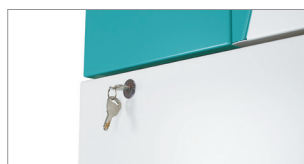
- Air-tight door seal and lockable door latch enhances tightness to door closure.
- High-quality 304 grade stainless steel interior.
- Efficient internal space use with height adjustable wire shelves.
- Dedicated stand with casters and stacking kit for FHG/FMG/FCG- 150 for use in labs with limited space. (optional)
- Three types of recorders to choose from (optional)
 - Dot recorder (6 point)
 - Chart recorder (6", 24hr/7 days)
 - Thermal line recorder

Safety

- High/low temperature protection, Over current protection.
- Open door alarm and automatic fan stop interlocked with door opening for minimization of heat loss.
- Keypad lock function, Built in door lock with a key.



Door open button



Door key lock



Display



Enough storage space

Laboratory Freezers

FDG models (for temperature range from -50°C to -35°C)

Model		FDG-300	FDG-650
Chamber volume (L / cu ft)		303 / 10.7	647 / 22.8
Temperature range (°C / °F)		-50 to -35 / -58 to -31	
Refrigerator (Hp)		1/3 x 2	1/2 x 2
No. of wire shelf (standard / max.)		3 / 11	3 / 17
No. of drawer shelf, slide (max., optional)		5	8
Max. load per shelf (kg / lbs)		26 / 57.3	30 / 66.1
Material	Interior / Exterior	Stainless steel #304 / Steel, 1 mm, powder coating	
	Insulation	120mm, Polyurethane foam	
Dimension (WxDxH)	Interior (mm / inch)	550x550x1000 / 21.7x21.7x39.4	700x675x1370 / 27.6x26.6x53.9
	Exterior (mm / inch)	805x800x1690 / 31.7x31.5x66.5	955x925x2060 / 37.6x36.4x81.1
	Net weight (kg / lbs)	180 / 396.8	280 / 617.3
Electrical requirements (230V, 60Hz)		5.0A	6.5A
Cat. No.		AAHE2411K	AAHE2421K
Electrical requirements (230V, 50Hz)		5.0A	6.5A
Cat. No.		AAHE2412K	AAHE2422K

1) Technical data according to DIN 12880.

FCG models (for temperature range from -35°C to -25°C)

Model		FCG-150	FCG-300	FCG-650
Chamber volume (L / cu ft)		154 / 5.4	303 / 10.7	647 / 22.8
Temperature range (°C / °F)		-35 to -25 / -31 to -13		
Refrigerator (Hp)		3/4	1	1-1/2
No. of wire shelf (standard / max.)		2 / 6	3 / 11	3 / 17
No. of drawer shelf, slide (max., optional)		3	5	8
Max. load per shelf (kg / lbs)		26 / 57.3		30 / 66.1
Material	Interior / Exterior	Stainless steel #304 / Steel, 1 mm, powder coating		
	Insulation	100mm, Polyurethane foam		
Dimension (WxDxH)	Interior (mm / inch)	550x570x490 / 21.7x22.4x19.3	550x550x1000 / 21.7x21.7x39.4	700x675x1370 / 27.6x26.6x53.9
	Exterior (mm / inch)	763x815x1055 / 30x32.1x41.5	765x760x1650 / 30.1x29.9x64.9	915x885x2020 / 36x34.8x79.5
	Net weight (kg / lbs)	123 / 271.2	155 / 341.7	238 / 524.7
Electrical requirements (230V, 60Hz)		6A	7.5A	10.5A
Cat. No.		AAHE2301K	AAHE2311K	AAHE2321K
Electrical requirements (230V, 50Hz)		6A	7.5A	10.5A
Cat. No.		AAHE2302K	AAHE2312K	AAHE2322K

FMG models (for temperature range from -25°C to -15°C)

Model		FMG-150	FMG-300	FMG-650
Chamber volume (L / cu ft)		154 / 5.4	303 / 10.7	647 / 22.8
Temperature range (°C / °F)		-25 to -15 / -13 to 5		
Refrigerator (Hp)		1/2	1/2	1/2
No. of wire shelf (standard / max.)		2 / 6	3 / 11	3 / 17
No. of drawer shelf, slide (max., optional)		3	5	8
Max. load per shelf (kg / lbs)		26 / 57.3		30 / 66.1
Material	Interior / Exterior	Stainless steel #304 / Steel, 1 mm, powder coating		
	Insulation	100mm, Polyurethane foam		
Dimension (WxDxH)	Interior (mm / inch)	550x570x490 / 21.7x22.4x19.3	550x550x1000 / 21.7x21.7x39.4	700x675x1370 / 27.6x26.6x53.9
	Exterior (mm / inch)	763x815x1055 / 30x32.1x41.5	765x760x1650 / 30.1x29.9x64.9	915x885x2020 / 36x34.8x79.5
	Net weight (kg / lbs)	120 / 264.6	150 / 330.7	233 / 513.7
Electrical requirements (230V, 60Hz)		4.5A	4.8A	5.5A
Cat. No.		AAHE2201K	AAHE2211K	AAHE2221K
Electrical requirements (230V, 50Hz)		4.5A	4.8A	5.5A
Cat. No.		AAHE2202K	AAHE2212K	AAHE2222K

FHG models (for temperature range from -15°C to 0°C)

Model		FHG-150	FHG-300	FHG-650
Chamber volume (L / cu ft)		154 / 5.4	303 / 10.7	647 / 22.8
Temperature range (°C / °F)		-15 to 0 / 5 to 32		
Refrigerator (Hp)		1/3	1/3	1/3
No. of wire shelf (standard / max.)		2 / 6	3 / 11	3 / 17
No. of drawer shelf, slide (max., optional)		3	5	8
Max. load per shelf (kg / lbs)		26 / 57.3		30 / 66.1
Material	Interior / Exterior	Stainless steel #304 / Steel, 1 mm, powder coating		
	Insulation	100mm, Polyurethane foam		
Dimension (WxDxH)	Interior (mm / inch)	550x570x490 / 21.7x22.4x19.3	550x550x1000 / 21.7x21.7x39.4	700x675x1370 / 27.6x26.6x53.9
	Exterior (mm / inch)	763x815x1055 / 30x32.1x41.5	765x760x1650 / 30.1x29.9x64.9	915x885x2020 / 36x34.8x79.5
	Net weight (kg / lbs)	120 / 264.6	150 / 330.7	230 / 507.1
Electrical requirements (230V, 60Hz)		3.5A	3.8A	3.8A
Cat. No.		AAHE2101K	AAHE2111K	AAHE2121K
Electrical requirements (230V, 50Hz)		3.5A	3.8A	3.8A
Cat. No.		AAHE2102K	AAHE2112K	AAHE2122K

* Technical data according to DIN 58375. * FDA establishment registered company. FDA listed products.



Performance

- Fully insulated chamber ensuring minimal chamber's temperature fluctuation.
- High thermal efficiency evaporation system, made of low corrosive materials.
- Auto-defrost system for automatic frost removal and manual defrost system for immediate frost removal.

Convenience

- Intuitive and easy-to-operate control panel with VFD and touch-sensitive buttons.
 - Easy temperature unit conversion between °C and °F
- Air-tight door seal and lockable door latch enhances tightness to door closure.
- High-quality 304 grade stainless steel interior.
- Easy to store samples with smooth full-extension sliding drawers.
- Precise documentation is available by the provided chart type recorder.
- Clear observation of stored samples.
 - Tempered glass door with built in heating wire.
 - Energy efficiency, long life span LED lighting.

Safety Features

- Dual temperature controllers for safe blood storage.
 - If one controller fails to adjust temperature, then the other automatically activates to counteract the failure.
- Battery backup for emergency caused by power failures.
- Built in auto-dialing remote alarm to alert abnormal temperature changes or power failures.
- High/low temperature protection, Over current protection.
- Open door alarm and automatic fan stop interlocked with door opening for minimization of heat loss.
- Keypad lock function, Built in door lock with a key.

Ideal for safe storage of precious blood samples.

Precise temperature uniformity with various safety functions to meet the strict requirements of the International medical standards. (ISO13485 / DIN 58371)



BSR-300

Standard accessories
see page 141

- Chart type recorder
- Auto dialing remote system
- Slide drawers, Door key

Model		BSR-300	BSR-650
Chamber volume (L / cu ft)		303 / 10.7	614 / 21.7
Temperature range (°C / °F)		4 / 39.2	
Refrigerator (Hp)		1/6	1/3
No. of drawer shelf, slide (standard / max.)		4 / 4	6 / 6
Max. load per shelf (kg / lbs)		26 / 57.3	30 / 66.1
Material	Interior	Stainless steel #304	
	Exterior	Steel, 1 mm, powder coating	
	Insulation	60mm, Polyurethane foam	
Dimension (WxDxH)	Interior (mm / inch)	550x550x1000 / 21.7x21.7x39.4	700x640x1370 / 27.6x25.2x53.9
	Exterior (mm / inch)	670x770x1515 / 26.4x30.3x59.6	820x860x1885 / 32.3x33.9x74.2
	Net weight (kg / lbs)	130 / 286.6	210 / 463
Electrical requirements (230V)		50/60Hz, 2.8A	50Hz, 3.8A 60Hz, 3.8A
Cat. No.		AAHE4105K	AAHE4112K AAHE4111K
Electrical requirements (120V)		60Hz, 5.5A	60Hz, 7.5A
Cat. No.		AAHE4103U	AAHE4113K

※ Technical data according to DIN 58371.

※ FDA establishment registered company. FDA listed products.

Plasma Freezers



The most suitable environments for sensitive plasma freezing.

Wide temperature range down to -40°C and high advanced safety functions satisfying the high medical standards. (ISO13485 / DIN 58375)



BSF-650

Standard accessories
see page 141

- Chart type recorder
- Auto dialing remote system
- Slide drawers, Door key

Performance

- Fully insulated chamber ensuring minimal chamber's temperature fluctuation.
- High thermal efficiency evaporation system, made of low corrosive materials.
- Auto-defrost system for automatic frost removal and manual defrost system for immediate frost removal.

Convenience

- Intuitive and easy-to-operate control panel with VFD and touch-sensitive buttons.
 - Easy temperature unit conversion between °C and °F
- Air-tight door seal and lockable door latch enhances tightness to door closure.
- High-quality 304 grade stainless steel interior.
- Easy to store samples with smooth full-extension sliding drawers.
- Precise documentation is available by the provided chart type recorder.

Safety

- Dual temperature controllers for safe blood storage.
 - If one controller fails to adjust temperature, then the other automatically activates to counteract the failure.
- Battery backup for emergency caused by power failures.
- Built in auto-dialing remote alarm to alert abnormal temperature changes or power failures.
- High/low temperature protection, Over current protection.
- Open door alarm and automatic fan stop interlocked with door opening for minimization of heat loss.
- Keypad lock function, Built in door lock with a key.

Model		BSF-300		BSF-650	
Chamber volume (L / cu ft)		303 / 10.7		647 / 22.8	
Temperature range (°C / °F)		-40 to -25 / -40 to -13			
Refrigerator (Hp)		1		1-1/2	
No. of drawer shelf, slide (standard / max.)		4 / 4		6 / 6	
Max. load per shelf (kg / lbs)		26 / 57.3		30 / 66.1	
Material	Interior	Stainless steel #304			
	Exterior	Steel, 1 mm, powder coating			
	Insulation	100mm, Polyurethane foam			
Dimension (WxDxH)	Interior (mm / inch)	550x550x1000 / 21.7x21.7x39.4		700x675x1370 / 27.6x26.6x53.9	
	Exterior (mm / inch)	765x760x1650 / 30.1x29.9x64.9		915x885x2020 / 36x34.8x79.5	
	Net weight (kg / lbs)	150 / 331		240 / 529	
Electrical requirements (230V)		50Hz, 5.5A	60Hz, 5.5A	50Hz, 7.5A	60Hz, 7.5A
Cat. No.		AAHE5102K	AAHE5101K	AAHE5112K	AAHE5111K
Electrical requirements (120V)		60Hz, 11A			
Cat. No.		AAHE5103U		-	

※ Technical data according to DIN 58375.

※ FDA establishment registered company. FDA listed products.



Performance

- Fully insulated chamber ensuring minimal chamber's temperature fluctuation.
- High thermal efficiency evaporation system, made of low corrosive materials.
- Auto-defrost system for automatic frost removal and manual defrost system for immediate frost removal.

Convenience

- Intuitive and easy-to-operate control panel with VFD and touch-sensitive buttons.
 - Easy temperature unit conversion between °C and °F
- High-quality 304 grade stainless steel interior.
- Easy to store samples with smooth full-extension sliding drawers.
- Precise documentation is available by the provided chart type recorder.
- Clear observation of stored samples.
 - Tempered glass door with built in heating wire.
 - Energy efficiency, long life span LED lighting.

Safety

- Dual temperature controllers for safe pharmaceutical storage.
 - If one controller fails to adjust temperature, then the other automatically activates to counteract the failure.
- Battery backup for emergency caused by power failures.
- Built in auto-dialing remote alarm to alert abnormal temperature changes or power failures.
- High/low temperature protection, Over current protection.
- Open door alarm and automatic fan stop interlocked with door opening for minimization of heat loss.
- Keypad lock function, Built in door lock with a key.

Ideal for pharmaceutical, clinical laboratories

Eco-friendly lab refrigeration systems with advanced safety features providing stable refrigerated environments (ISO13485 / DIN 58345)



PSR-300

Standard accessories
see page 141

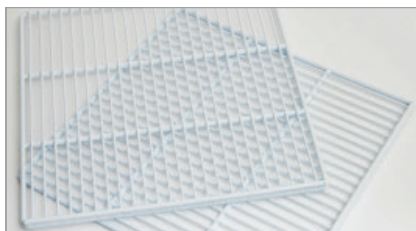
- Chart type recorder
- Auto dialing remote system
- Slide drawers, Door key

Model		PSR-300	PSR-650	
Chamber volume (L / cu ft)		303 / 10.7	614 / 21.7	
Temperature range (°C / °F)		2 to 10 / 35.6 to 50		
Refrigerator (Hp)		1/6	1/3	
No. of drawer shelf, slide (standard / max.)		4 / 4	6 / 6	
Max. load per shelf (kg / lbs)		26 / 57.3	30 / 66.1	
Material	Interior	Stainless steel #304		
	Exterior	Steel, 1 mm, powder coating		
	Insulation	60mm, Polyurethane foam		
Dimension (WxDxH)	Interior (mm / inch)	550x550x1000 / 21.7x21.7x39.4	700x640x1370 / 27.6x25.2x53.9	
	Exterior (mm / inch)	670x770x1515 / 26.4x30.3x59.6	820x860x1885 / 32.3x33.9x74.2	
	Net weight (kg / lbs)	130 / 286.6	210 / 463	
Electrical requirements (230V)		50/60Hz, 2.8A	50Hz, 3.8A	60Hz, 3.8A
Cat. No.		AAHE6015K	AAHE6022K	AAHE6021K
Electrical requirements (120Hz)		60Hz, 5.5A	60Hz, 7.5A	
Cat. No.		AAHE6013U	AAHE6023U	

※ Technical data according to DIN 58345.

※ FDA establishment registered company. FDA listed products.

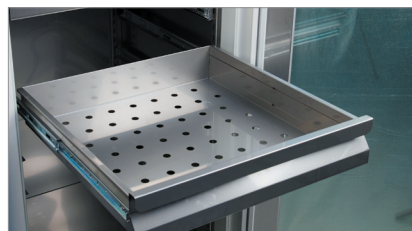
Accessories & Options



Wire shelves



Wire shelves (slide type)



Drawer shelves (slide type)



Dot recorder



Chart recorder



Thermal line recorder

for Laboratory Cooling

Cat. No.	Description	CLG-150	CLG-300	CLG-650	CLG-850	CLG-1400	
AAAE1511	Wire shelves - flat type (included shelf bracket)	●	●	-	-	-	
AAAE1512		-	-	●	-	●	
AAAE1513		-	-	-	●	-	
AAAE1514	Wire shelves - slide type (included guide rail)	●	●	-	-	-	
AAAE1515		-	-	●	-	●	
AAAE1516		-	-	-	●	-	
AAAE1517	Drawer shelves - slide type (included guide rail)	●	●	-	-	-	
AAAE1518		-	-	●	-	●	
AAAE1519		-	-	-	●	-	
AAAE1562	Recorder set; Recorder (dot type, 6 point) with Temp. sensor	●	●	●	●	●	
AAAE1501	Recorder set; Recorder (chart type, 6", 24hr / 7day) with Temp. sensor	●	●	●	●	●	
AAAE1502	Chart recorder paper (6", 60ea/1 package)	●	●	●	●	●	
AAAE1563	Recorder set; Recorder (thermal line type) with Temp. sensor	●	●	●	●	●	
AAAE1551	Auto dialing remote system	●	●	●	●	●	
AAAE1521	Cable port	-	●	●	●	●	
AAAE1531	Electric outlet (120V-US style)	-	●	●	●	●	
AAAE1532	Electric outlet (230V-Korea style)	-	●	●	●	●	
Cat. No.	Description	FHG-150 / FMG-150	FHG-300 / FMG-300	FHG-650 / FMG-650	FCG-150	FCG-300 / FDG-300	FCG-650 / FDG-650
AAAE1511	Wire shelves - flat type (included shelf bracket)	●	●	-	●	●	-
AAAE1512		-	-	●	-	-	●
AAAE1517		●	●	-	●	●	-
AAAE1518	Drawer shelves - slide type (included guide rail)	-	-	●	-	-	●
AAAE1562	Recorder set; Recorder (dot type, 6 point) with Temp. sensor	●	●	●	●	●	●
AAAE1501	Recorder set; Recorder (chart type, 6", 24hr / 7day) with Temp. sensor	●	●	●	●	●	●
AAAE1502	Chart recorder paper (6", 60ea/1 package)	●	●	●	●	●	●
AAAE1563	Recorder set; Recorder (thermal line type) with Temp. sensor	●	●	●	●	●	●
AAAE1551	Auto dialing remote system	●	●	●	●	●	●

for Medical Cooling

Cat. No.	Description	BSR-300	BSR-650
AAAE1517	Drawer shelves - slide type (included guide rail)	•	-
AAAE1518		-	•
AAAE1501	Recorder set; Recorder (chart type, 6", 24hr / 7day) with Temp. sensor	•	•
AAAE1502	Chart recorder paper (6", 60ea/1 package)	•	•
AAAE1551	Auto dialing remote system	•	•

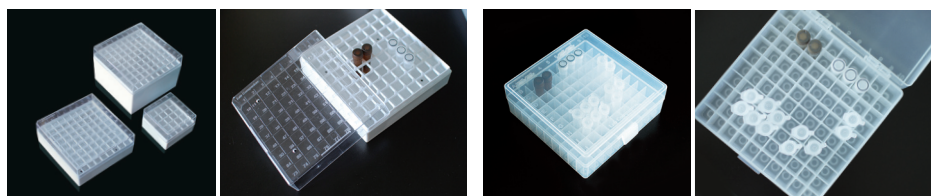
Cat. No.	Description	BSF-300	BSF-650
AAAE1517	Drawer shelves - slide type (included guide rail)	•	-
AAAE1518		-	•
AAAE1501	Recorder set; Recorder (chart type, 6", 24hr / 7day) with Temp. sensor	•	•
AAAE1502	Chart recorder paper (6", 60ea/1 package)	•	•
AAAE1551	Auto dialing remote system	•	•

Cat. No.	Description	PSR-300	PSR-650
AAAE1511	Wire shelves - flat type (included shelf bracket)	•	-
AAAE1512		-	•
AAAE1514	Wire shelves - slide type (included guide rail)	•	-
AAAE1515		-	•
AAAE1517	Drawer shelves - slide type (included guide rail)	•	-
AAAE1518		-	•
AAAE1501	Recorder set; Recorder (chart type, 6", 24hr / 7day) with Temp. sensor	•	•
AAAE1502	Chart recorder paper (6", 60ea/1 package)	•	•
AAAE1551	Auto dialing remote system	•	•

Cryo box / Storage box

Cryo box is designed for ultra-low temperature storage of biological materials. (heat resistance: -196°C to 121°C)

Storage box is suitable for storage of samples in general conditions. (heat resistance: 20°C to 121°C)



Cryo box

Storage box

Cat. No.	Description	Dimension (WxDxH) (mm / inch)
AAAJ7001	Cryo box (PC, 1.2 to 2.0ml tubes x 25)	77×77×53 / 3.0×3.0×2.1
AAAJ7002	Cryo box (PC, 1.2 to 2.0ml tubes x 81)	132×132×54 / 5.2×5.2×2.1
AAAJ7003	Cryo box (PC, 5ml tubes x 81)	132×132×96 / 5.2×5.2×3.8
AAAJ7011	Storage box (PP, 1.2 to 2.0ml tubes x 100)	140×140×53 / 5.5×5.5×2.1

※ 5ea for 1 set.