

Stainless Steel Series *ultraD* Water Meters

Features



Superior hydraulic design, no moving parts, zero wear, eliminate maintenance

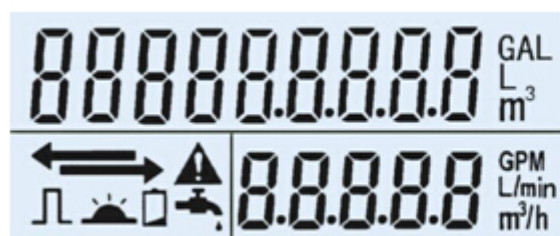
- Advanced ultrasonic technology for precise and ultra reliable metering
- Extremely wide turndown ratio (R=500)

- Excellent long-term stability and reliability
- Extremely sensitive and accurate in low flow
- Battery powered – above 10 years or up to 20 years life expectancy
- Made with highly durable materials - epoxy coated cast iron, stainless steel (304, 316, 316L), available for medicine and health as well as sea water and corrosive fluid metering
- Ruggedized construction - Fully submersible design (IP68)

Technical Specifications

Maximum Working Pressure	1.6MPa
Temperature Class	T30, T50 (Higher temperature customizable)
Accuracy Class	Class 2 (ISO4064:2005, Class 1 customizable)
Battery Powered	3.6 V Li Battery, above 10 years, 20 years
Ingress Protection	IP68
Environment Temperature	-20~70°C, ≤100%RH
Pressure Loss	Δp10
Climatic and Mechanical Environment	Class C
Display	9 digit LCD Display + prompts Cumulative flow (m³), Instantaneous flow (m³/h), Flow direction, Alarm, Battery level, Output mode, etc.
Connections	Threads (DN15-40), Flanges (DN50-300) according to DIN (EN1092-1) (Other standards customizable)
Electromagnetic Environment Class	E2
Flow Profile Sensitivity	U3/D0
Date Storage	Store the data in last 7×24h, 365 days and 72 months
Output (optional)	RS485 (ModBus), M-Bus, OCT pulse, two wire 4-20mA
Accessories	Wireless GPRS/GSM, Wireless handheld operator
Standards	ISO4064: 2005, EN14154
Related Patents	ZL 2011 2 0033304.X, ZL 2012 3 0466985.9

Digital Display



Volume units



Flowrate units



Leak detect



IR Communication



Flow direction



Low battery alert



Pulse output



Alarm

Applications

ultraD can be widely used in utilities, waterworks, commercial, industrial, agricultural, medicine and health application as well as seawater and corrosive fluid metering.

Measuring Range *

DN	mm	15	20	20	25	32	40	50	65	80	100	150	200	250	300
	inch	1/2	3/4	3/4	1	1 1/4	1 1/2	2	2 1/2	3	4	6	8	10	12
Starting Flow (m ³ /h)		0.001	0.001	0.001	0.002	0.003	0.005	0.01	0.013	0.02	0.03 1	0.0 69	0.12 2	0.19 1	0.27 5
Q1 (m ³ /h)		0.005	0.08	0.013	0.02	0.05	0.08	0.08	0.13	0.13	0.2	0.5	0.8	2	2
Q2 (m ³ /h)		0.008	0.0128	0.021	0.032	0.08	0.128	0.128	0.2	0.2	0.32	0.8	1.28	3.2	3.2
Q3 (m ³ /h)		2.5	4	6.3	10	25	40	40	63	63	100	250	400	1000	1000
Q4 (m ³ /h)		3.125	5	7.875	12.5	31.25	50	50	80	80	125	313	500	1250	1250
R - Q3/Q1		500													

Dimensions *

Nominal Size	(mm)	15	20	25	32	40	50	65	80	100	150	200	250	300	
	(inch)	1/2	3/4	1	1 1/4	1 1/2	2	2 1/2	3	4	6	8	10	12	
L - Length (mm)		165	190	260	260	300	200	200	225	250	300	350	450	500	
B - Width (mm)		96	96	96	90	130	125	142	186	204	285	340	395	445	
H - Height (mm)		111	115	120	130	132	180	185	213	226	280	327	374.5	414.5	
h - Height (mm)		14	18	23	19	20	65	68	93	102	142.5	170	197.5	222.5	
Weight (kg)-SS		1.0	1.2	1.4	4.8	6.5	9	11	13	16	29	46	60	74	
Weight (kg)-Cast Iron							6	6.5	13	16	30	45	55	68	
Installation		Threaded						Flanged							